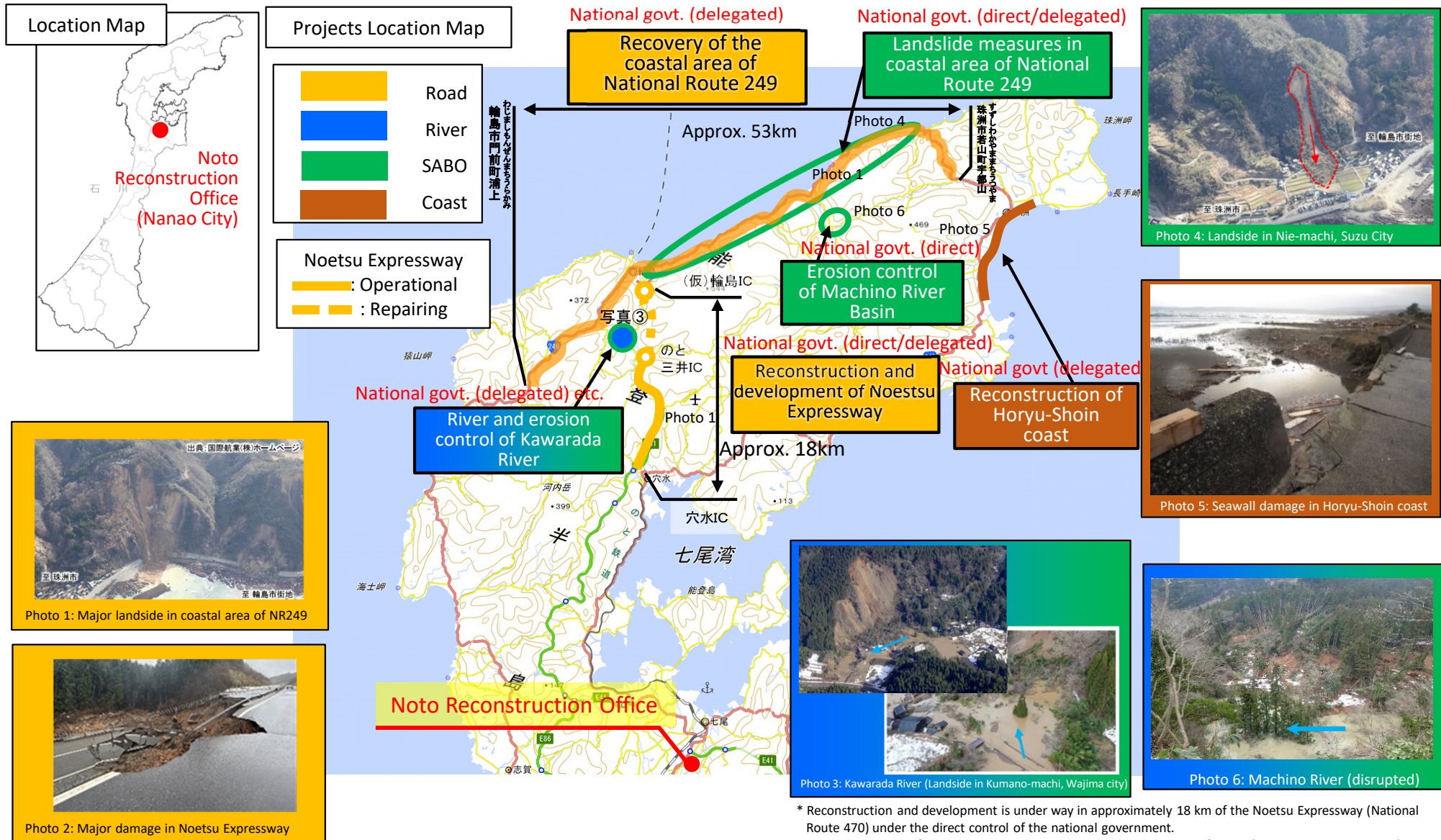


1. The national government rehabilitates rivers, erosion control, coasts, and roads on behalf of local government.

○ For recovery and reconstruction from the 2024 Noto Peninsula Earthquake, the Ministry of Land, Infrastructure, Transport and Tourism is carrying out full-scale restoration of the Noetsu Expressway and the coastal area of National Route 249, landslide countermeasures along the way, river and erosion control projects on the Kawarada River, and restoration of the Horyu-Shoin Coast on behalf of the local government.



Location Map

Projects Location Map

- Road
- River
- SABO
- Coast

- Noetsu Expressway : Operational
- : Repairing



Photo 1: Major landslide in coastal area of NR249



Photo 2: Major damage in Noetsu Expressway



Photo 4: Landslide in Nie-machi, Suzu City



Photo 5: Seawall damage in Horyu-Shoin coast

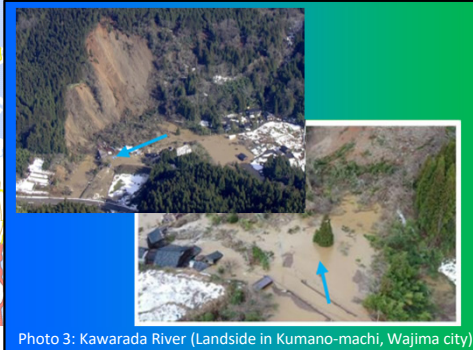


Photo 3: Kawarada River (Landslide in Kumano-machi, Wajima city)



Photo 6: Machino River (disrupted)

* Reconstruction and development is under way in approximately 18 km of the Noetsu Expressway (National Route 470) under the direct control of the national government.
 In the section of the Noetsu Expressway managed by Ishikawa Prefecture (Anamizu IC ramp section), disaster recovery was carried out by the national government with delegated authority.

2. Recovery measures for rivers, erosion control, and coasts affected by the 2024 Noto Peninsula earthquake

○ Among the areas where disasters have occurred, the government has implemented emergency erosion control work in areas where sediment and driftwood have accumulated in unstable conditions, such as areas where river channels are blocked, and where there is a high risk of secondary disasters due to future rainfall, or where damage to facilities has occurred. * All areas that require emergency measures by the flood season (June) have been completed.

○ At the same time, while conducting geological surveys, etc., we are designing for full-scale restoration.

① Kumano-machi, Wajima City, Ishikawa Pref.

⑥ Nie-machi, Suzu City, Ishikawa Pref. ⑪ Shibuta-machi, Wajima City, Ishikawa Pref.

② Ichinose-machi, Wajima City, Ishikawa Pref.



⑫ Ishikawa Pref., Suzu City, Shoin-machi ~ Horyu-machi

③ Teraji, Machino-machi, Wajima City, Ishikawa Pref.

4. National Route 249 Emergency Recovery Status (Enlightenment status)

- ① There were 232 confirmed damages in the coastal area of National Route 249 (L≒55km). Of these, the areas that are closed due to insurmountability are 3 areas of slope collapse and landslides, and 2 tunnels.
- ② Due to emergency restoration work using temporary pavement, two lanes are being opened except for the section where the road is closed.

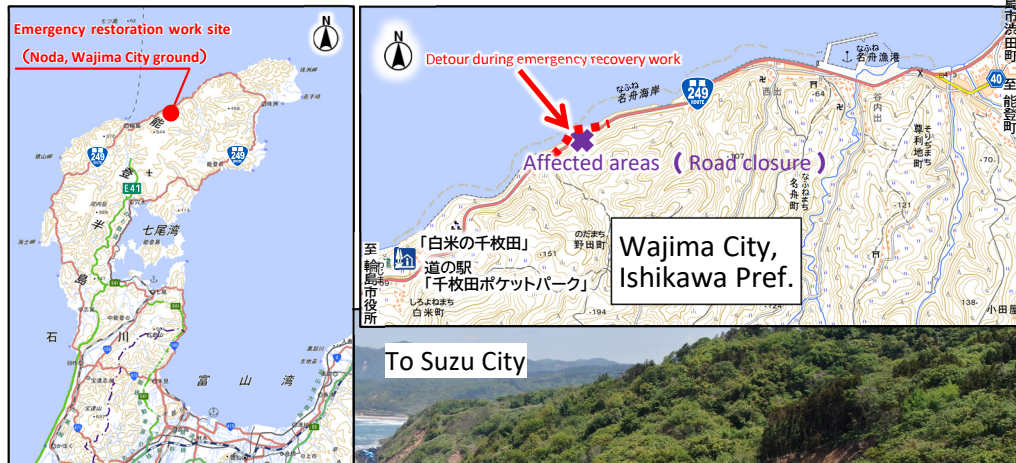


【Directly controlled authority agency section】 National Route 249 coastal area L≒55km (including Wajima bypass L=2km)



- Of the five large-scale collapse locations where road closures continue in the section under direct authority by national government, in Senmaida (Noda District) in Wajima City, **for the first time since the earthquake, temporary road opened up traffic to emergency vehicles and local vehicles as the first road after obstacles eliminated** (May 2 at 12:00~)。
- About 50 people, including related organizations and local residents, gathered at the Nafune Fishing Port just before the event, and were explained on traffic precautions in addition to exhibiting panels such as response measures to the earthquakes so far and an overview of the development of the road.
- Greatly contributed to local recovery and reconstruction activities, such as reducing the traveling time for residents in the Nafune area to Senmaida **from 1 hour and 30 minutes to 5 minutes**.

【Location Map】



【Traffic liberation (left: Nafune side, right; Senmaida side)】



【Explanation of precautions】



【Panel Exhibit】



【Voices of the community】

Local residents: "It is very helpful because it takes 15 minutes to go from 1 hour to Wajima Hospital."
Mayor of Nashu Ward: I hope that with the opening of the line, people will return to Nafune, and the town will be restored to its original state.