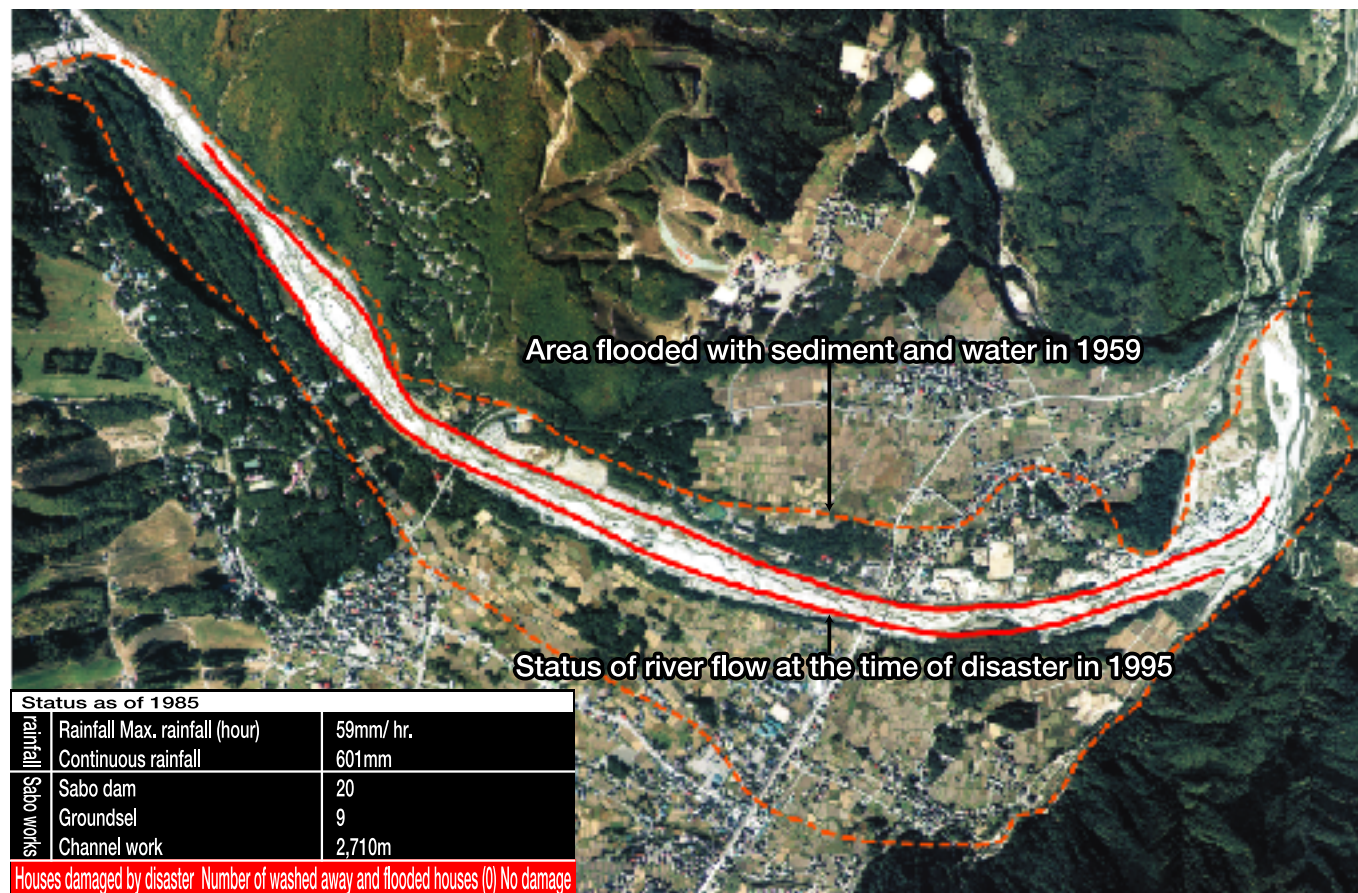
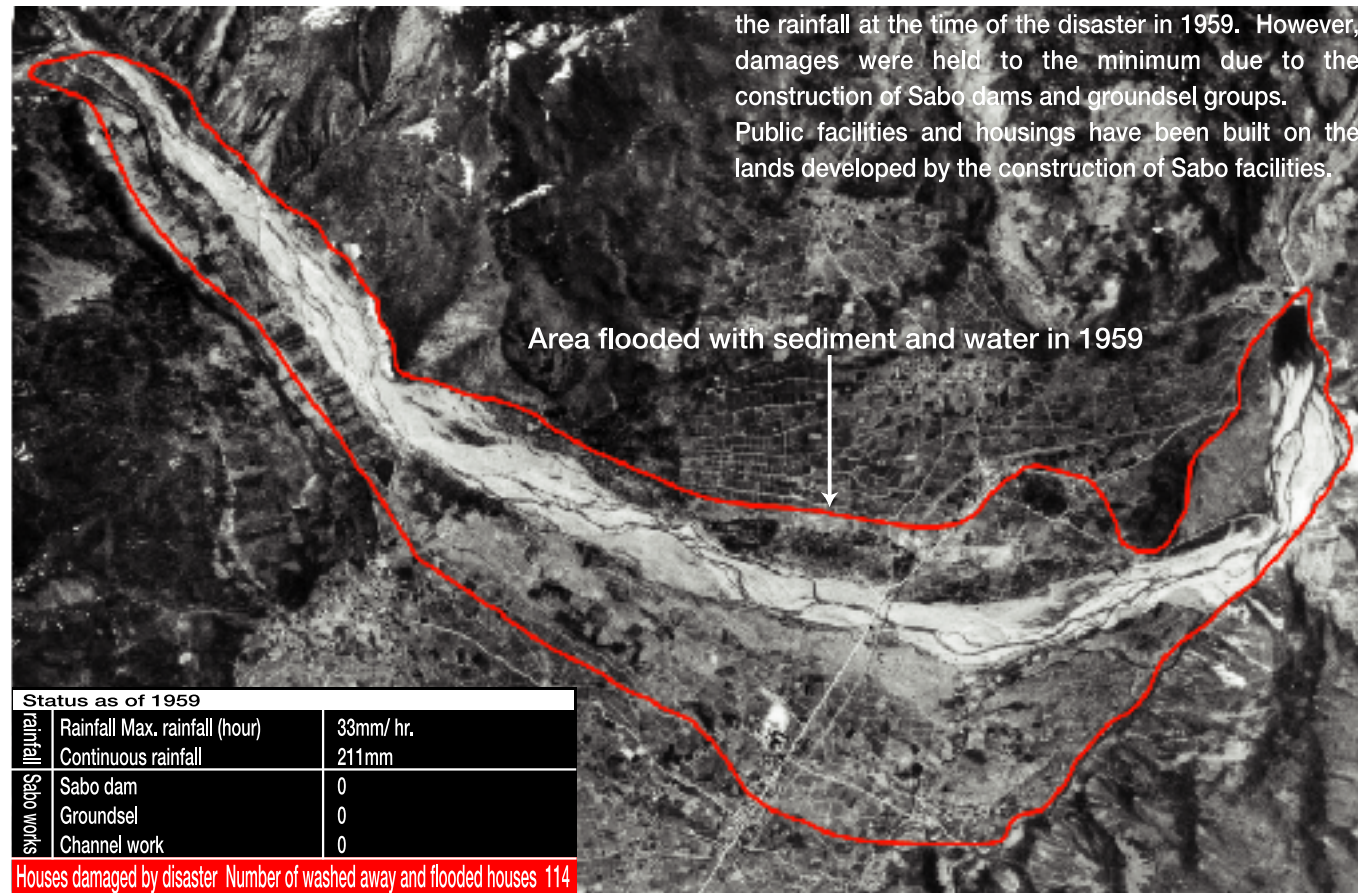


# Effect of Sabo Works

●Effects of Sabo works and changes in land utilization  
 ~Areas along Matsukawa River in Hakubamura Village, Nagano Prefecture~

In July 1995 the area along Matsukawa River experienced the most serious flood in history. The area was hit with continuous rainfall three times as the rainfall at the time of the disaster in 1959. However, damages were held to the minimum due to the construction of Sabo dams and groundsel groups. Public facilities and housings have been built on the lands developed by the construction of Sabo facilities.



\*At present there are 512 houses in the flooded area in 1959.

●Sediment captured in Maruyama Sabo dam  
 (at the time of disaster in 1995)



●Sediment captured in Nakamatagawa River No,1 Sabo dam  
 (at the time of disaster in 1995)

## For international exchanges

Matsumoto Sabo Work Office is actively trying to promote international exchanges. In 1992 Matsumoto Sabo Control Office hosted "International Alps Summit" and "International Landscape symposium" as a part of "International Alps Sabo Festival" (sponsored by the Executive Committee). The meetings were attended with four guests (including Deputy Mayor of Annecy, France) from overseas and seven guests from Japan (including Mr. Yoshiaki Arima, Mayor of Azumi Village). In the meetings active discussions were held on "Internationalization and activation of the area" with "Summit Appeal" adopted. Matsumoto Sabo Work Office also hosted "International Sabo Forum in Matsumoto" (sponsored by the Executive Committee) in 1994 and sponsored "Omachi - Innsbruck Friendship Memoriam: International Sabo Forest Symposium", to forward the internationalization by steady steps. With a keyword "Sabo", which has been accepted as an international word, Matsumoto Sabo Work Office is strenuously endeavoring for promotion of international exchanges.



"International Alps Summit" in 1992



●Sabo to support the area—For protection of safety and beautiful nature~

Starting from the stream sources in Hakuba mountain range, Matsukawa and Hirakawa Rivers form large fans with a large amount of sediment, flowing into Himekawa River which runs through the center of Hakuba Village. Under the threat of sediment-related disasters of Matsukawa and Hirakawa Rivers, continuous efforts have been made to develop various Sabo facilities. The results are the creation of space in which people can live safely.

The North Japan Alps is a natural treasure house blessed with high noble mountain peaks and fresh air. Many people visit this place to enjoy nature throughout the year. Sabo works are still in progress to protect lives of people as well as natural environment.